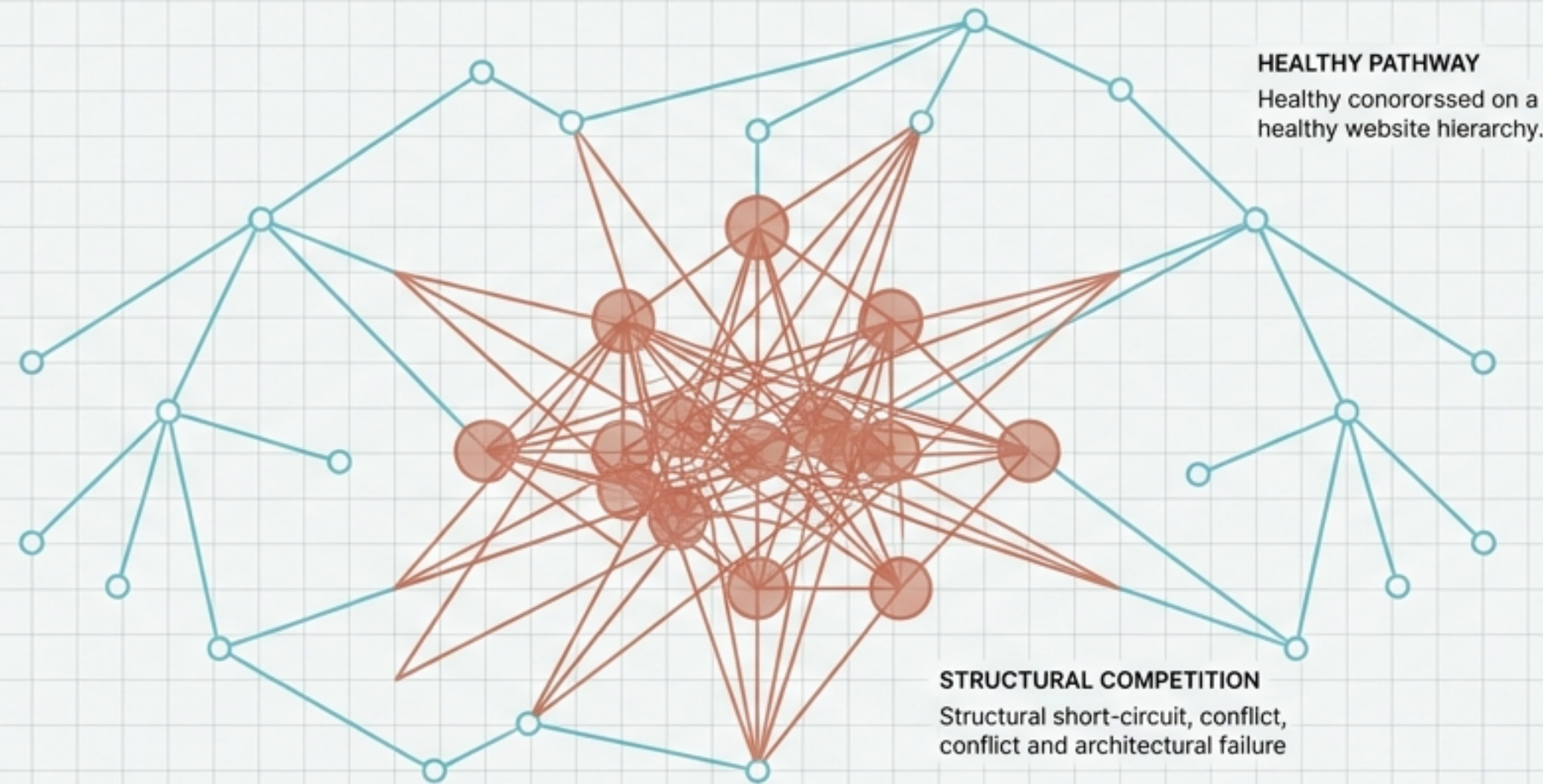


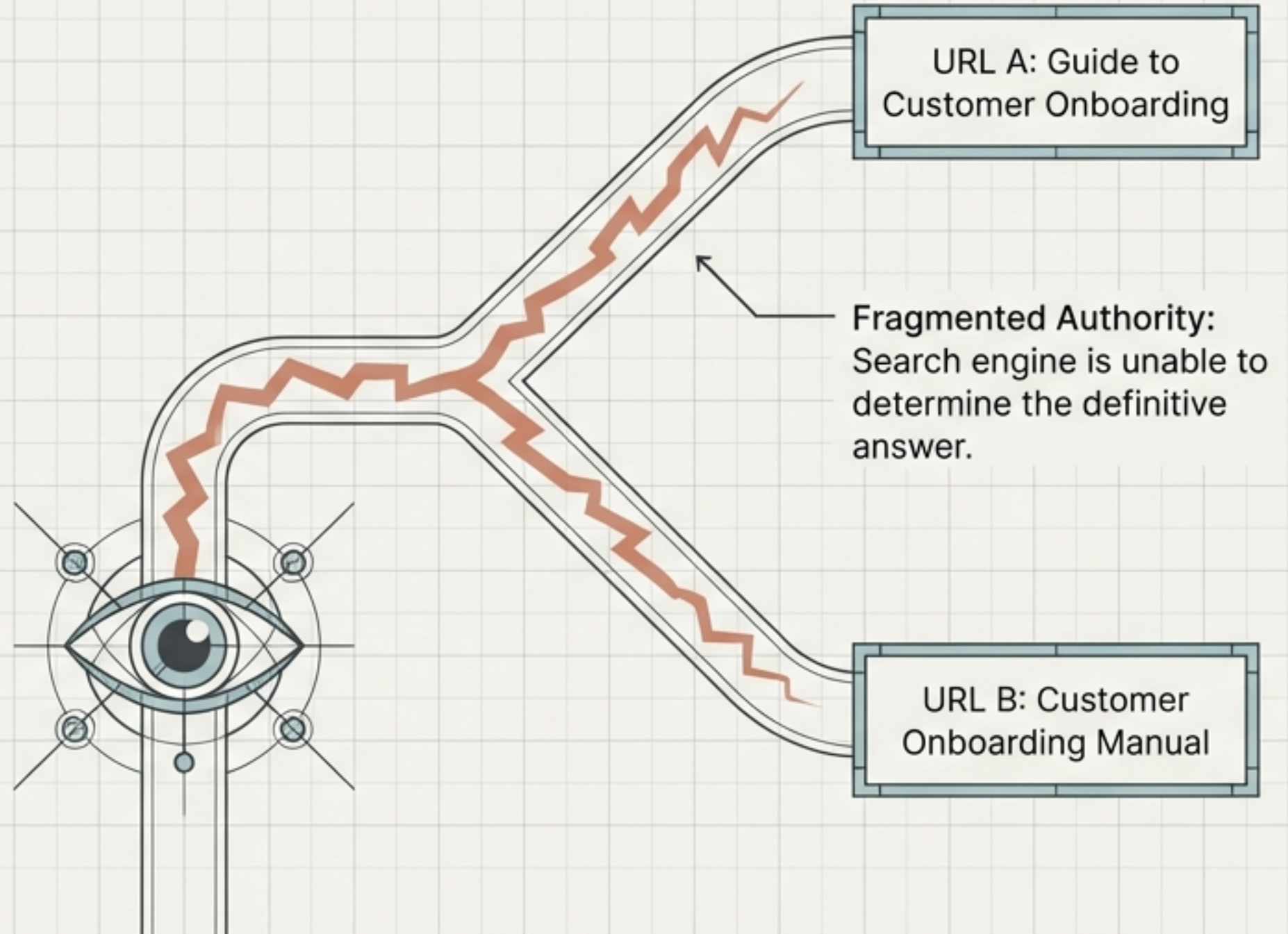
The Silent Traffic Killer: A Diagnostic Guide to Keyword Cannibalization

Identifying, diagnosing, and resolving structural competition in modern SEO



The Anatomy of an Attention Split

Keyword cannibalization is a structural failure where multiple pages lack **unique focus**, forcing them to compete against each other. Google does not penalize you for having multiple pages on a topic; rather, it struggles to identify the primary page, splitting ranking power among several weaker URLs.



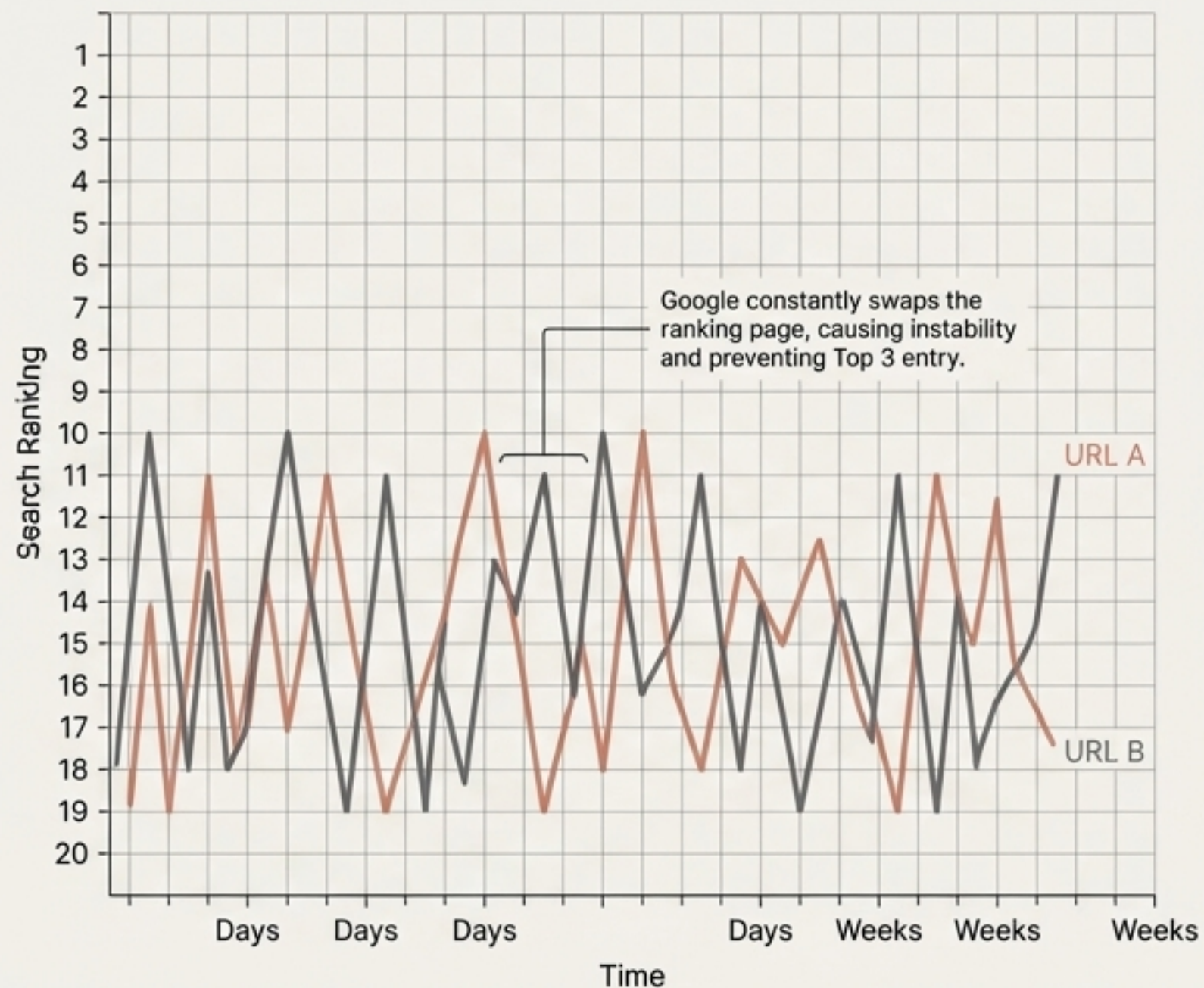
The Cannibalization Spectrum

	Keyword Cannibalization	Search Intent Cannibalization	Content Cannibalization
Definition	Multiple pages targeting the exact same keyword.	Pages satisfying the exact same searcher goal.	Similar text or databases across different pages.
Primary Cause	Poor title and URL optimization.	Uncoordinated content strategy across teams.	Programmatic generation (e.g., location filters).
Identification Signal	Same target queries overlapping in Search Console.	Product pages outranking documentation for info queries.	Identical listicles generated from dynamic search parameters.
Primary Risk	Split link equity.	High bounce rates and poor UX.	Wasted crawl budget.
Best Fix	De-optimize competing page.	Differentiate intent (Informational vs. Transactional).	Merge or Canonicalize.

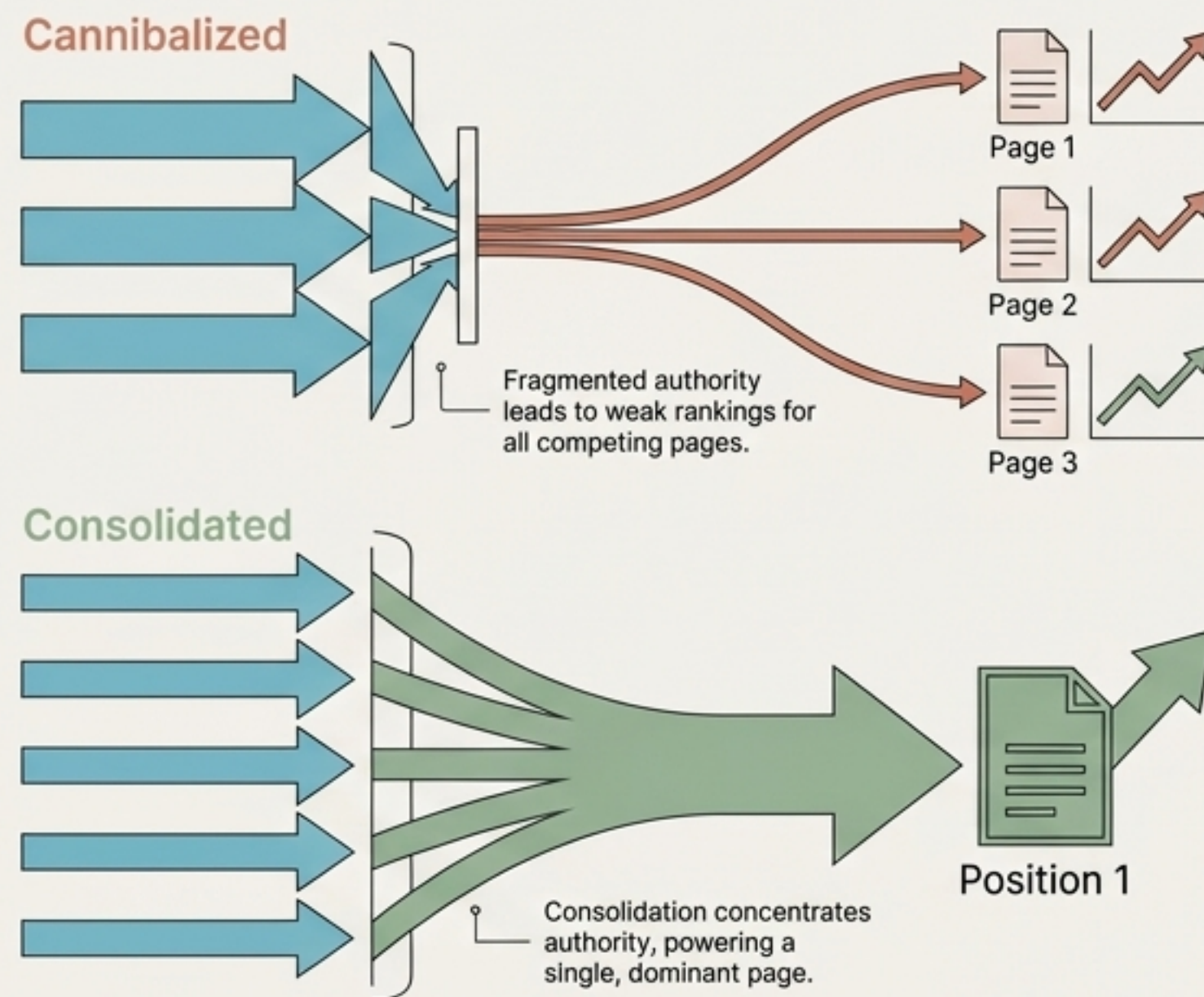
The Damage Report: Why Self-Competition Hurts

Consolidating cannibalized efforts yields massive results—case studies show up to a 110% uplift in organic sessions post-consolidation.

The Seesaw Effect



The Link Equity Leak



The Diagnostic Radar: Identifying Symptoms

Occasional ranking fluctuations are normal, but persistent patterns of URL swapping are definitive red flags.

Fluctuating URLs

Premium Architectural Design
Services | Firm Name

www.firmname.com/services/design



Architectural Design Process
& Approach | Firm Name

www.firmname.com/blog/design-process

Multiple URLs ranking for
the exact same term.

Stalled Rankings



Unable to move up despite
active optimization and
backlink building.

Intent Mismatch

Bounce Rate:

85% ↑
(Rising)

CTR:

1.2% ↓
(Dropping)

Wrong URL ranking:
Informational blog outranking
the transactional product page.

The Auditor's Toolkit: Finding the Overlap

Path 1: Google Search Console

Performance Report

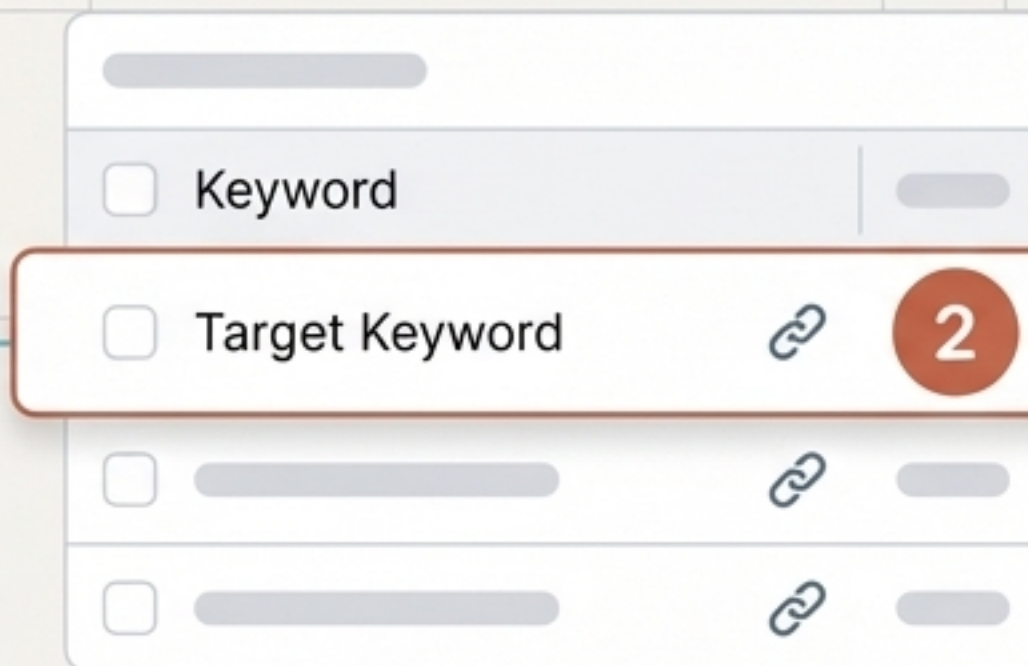
New Filter -> Query
(Enter target keyword)

Switch to Pages tab

If multiple URLs share high impressions/clicks here, you have cannibalization.

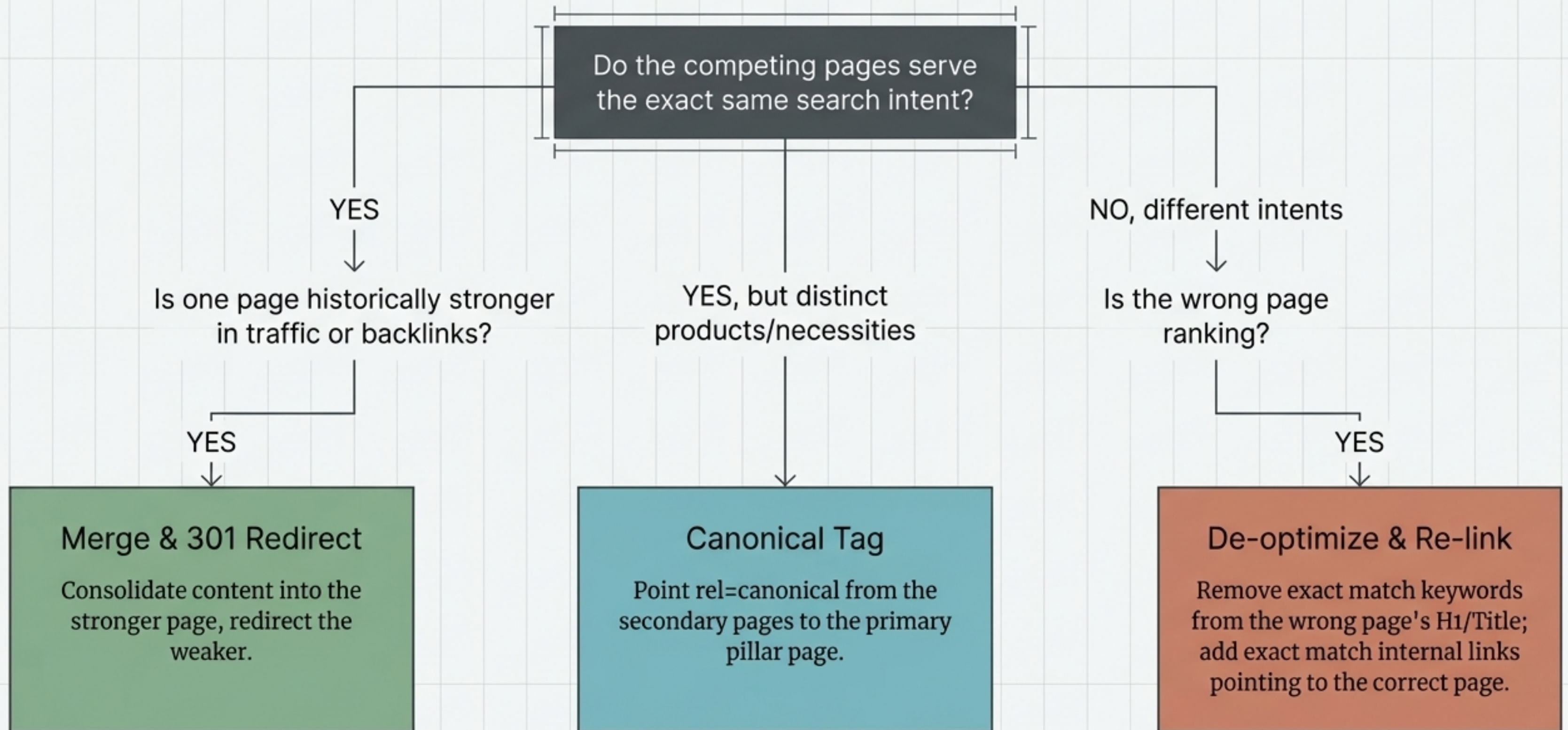
Path 2: Third-Party Trackers

Path 2: Third-Party Trackers



SERP tools detect two competing URLs for a single query.

The Resolution Flowchart

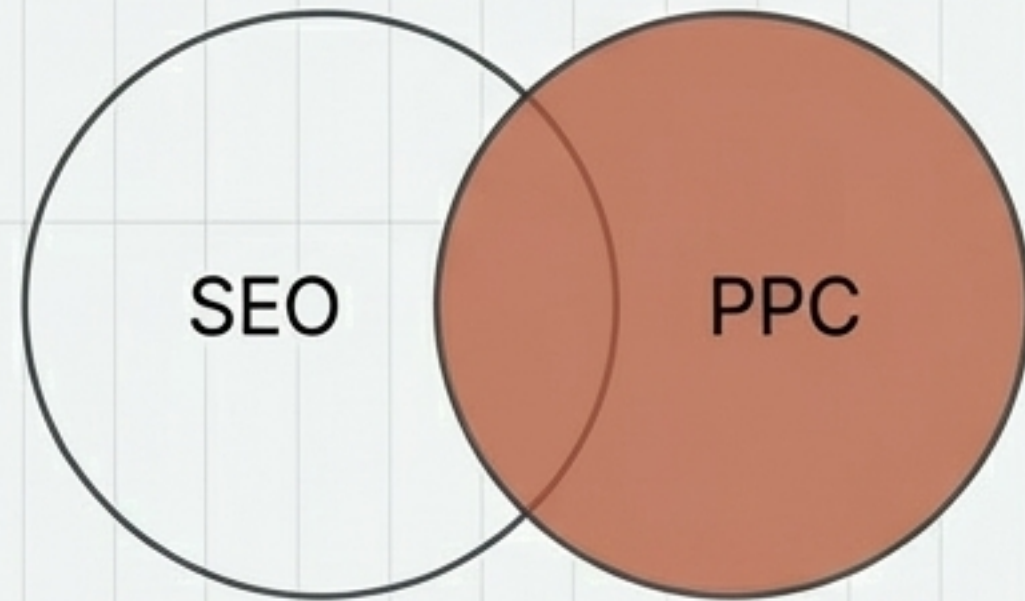


The Nuance: Paid vs. Organic Cannibalization

Is your branded paid search driving net-new growth, or simply stealing clicks your organic SEO would have captured for free?

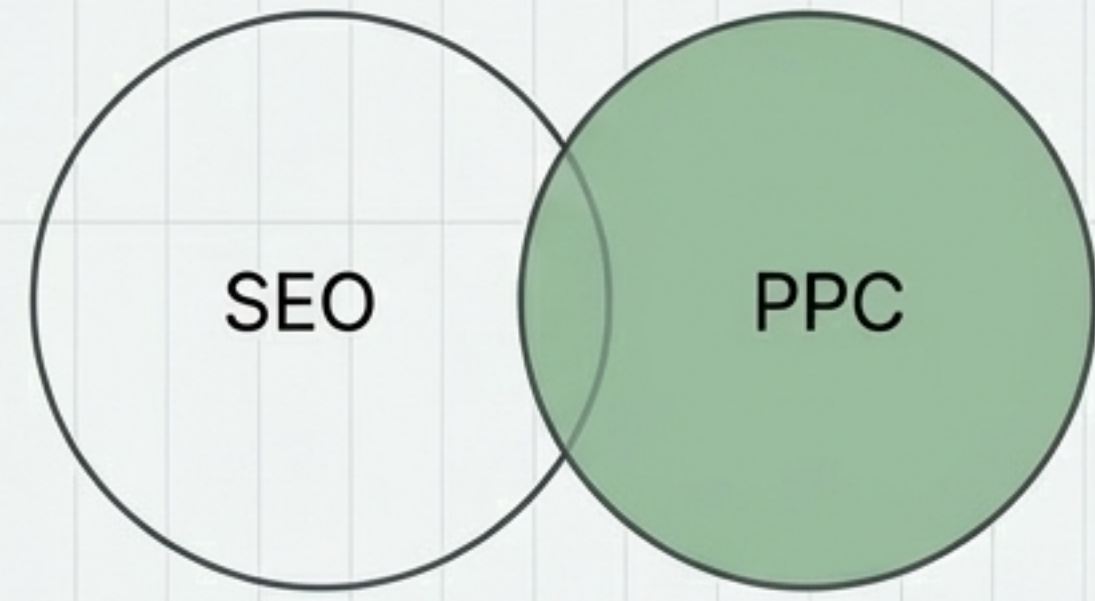
The Incrementality Test

Cannibalization (Rent Strategy)



Paying for clicks you already own.

Incrementality (Dominate Strategy)



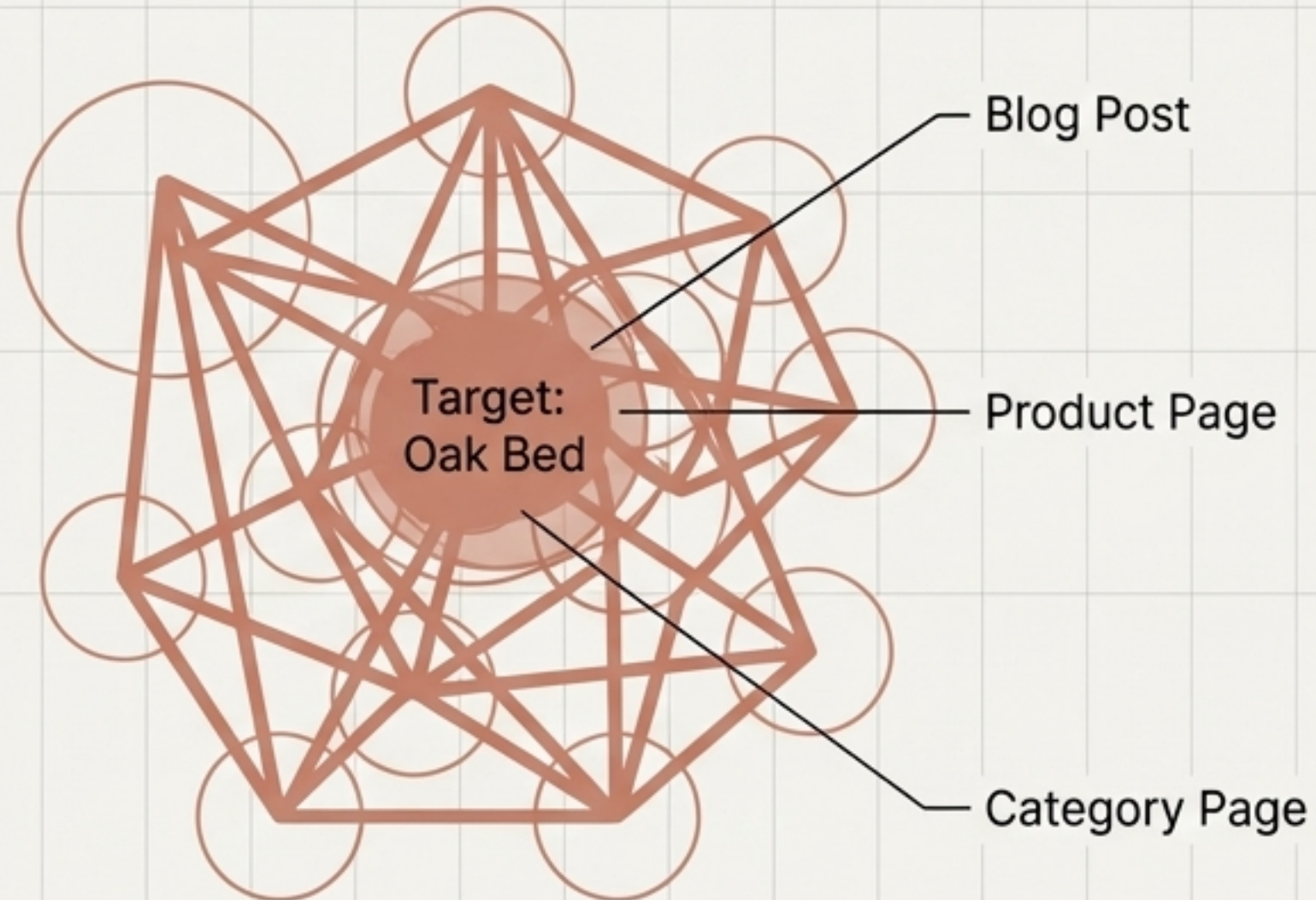
Using PPC for net-new mid/top funnel reach.

Case Study: Disabling branded paid search resulted in SEO clicks increasing by 38%, with overall brand clicks growing by 3%. Recommendation: Limit branded PPC spend to ~10% of budget.

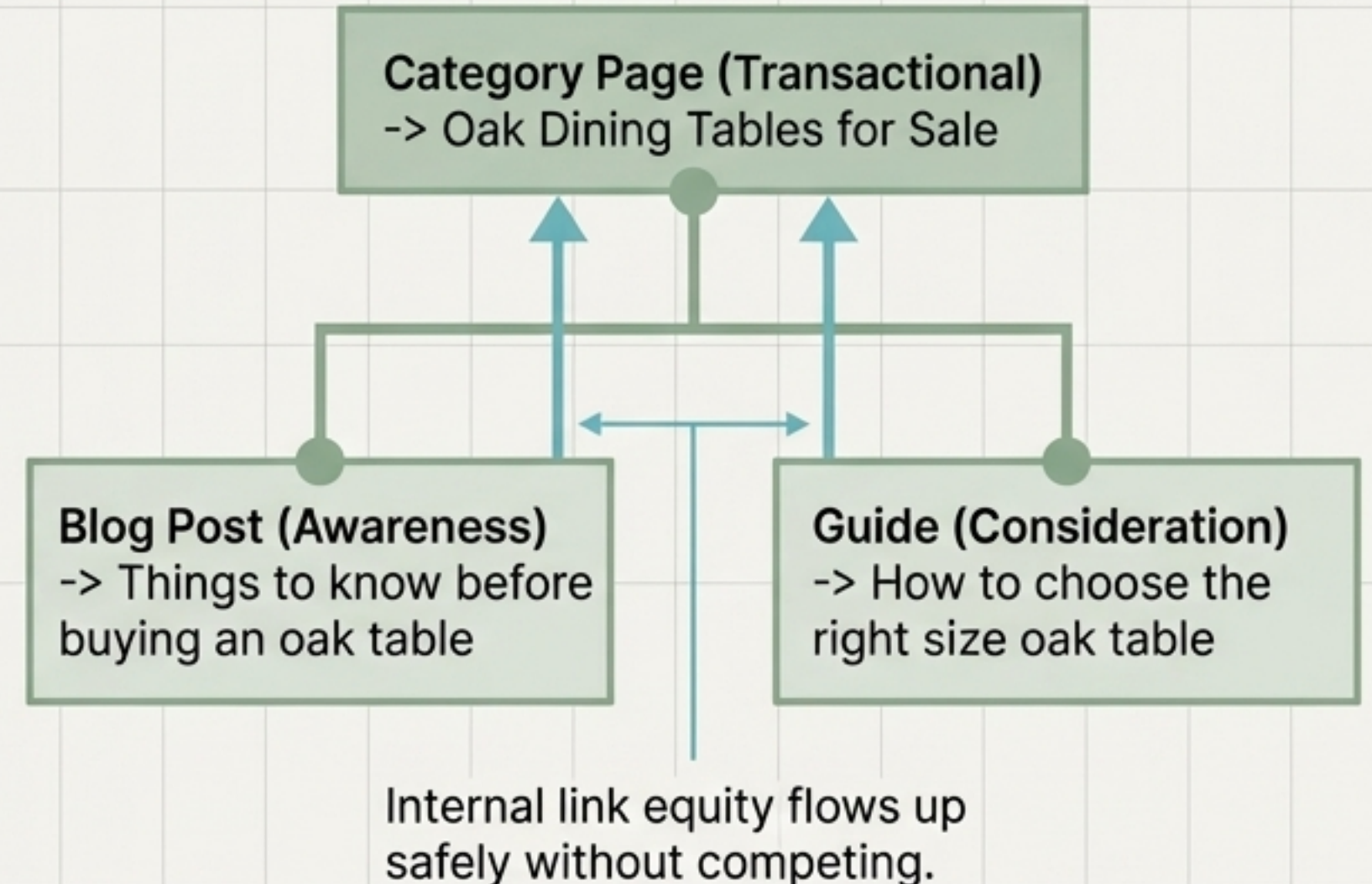
Synthesis: Designing Healthy Architecture

The ultimate cure for cannibalization is distinct search intent mapping.

The Tangled Web



The Hub-and-Spoke



The Preventive Playbook

- Topic Mapping:** Maintain a master record of targeted keywords to prevent overlapping content before writing begins.
- Intent Separation:** Assign a unique target keyword and specific search intent (Informational, Transactional, Navigational) to every new page.
- Routine Radar Audits:** Check Google Search Console monthly for fluctuating URLs or unexpected pages ranking for core terms.
- Hierarchy & Linking:** Use descriptive anchor text to internally link supporting content upward to primary pillar pages.
- Prune and Merge:** Regularly audit legacy content. If it doesn't serve a unique intent, merge it, redirect it, or remove it.

Clean architecture is continuous. Build with purpose.